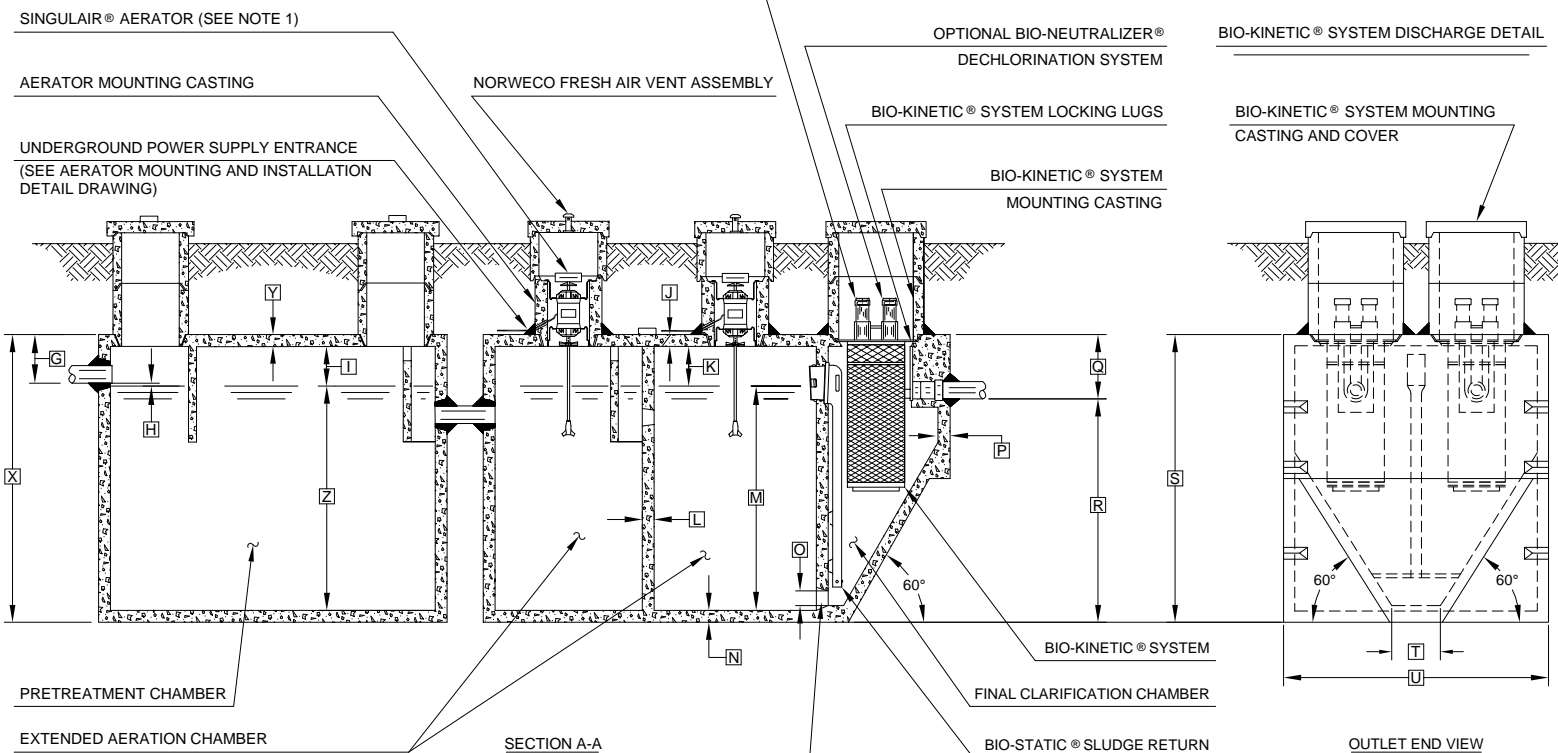


PLAN VIEW

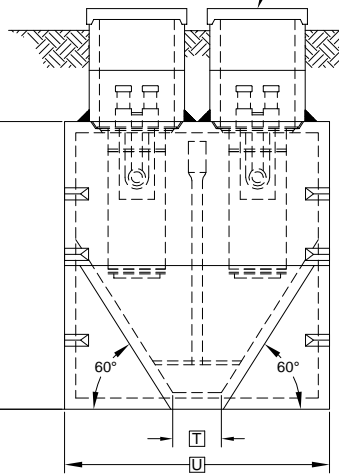
- GENERAL NOTES:**
- ① SINGLAIR® AERATOR, AS TESTED AND ACCEPTED BY NSF.
 - ② FALL THROUGH SINGLAIR® PLANT FROM INLET INVERT TO OUTLET INVERT IS FOUR INCHES. INLET INVERT IS TWELVE INCHES BELOW TANK TOP.
 - ③ ON DEEPER INSTALLATIONS, PRECAST RISERS MUST BE USED TO EXTEND AERATOR MOUNTING CASTING AND BIO-KINETIC® SYSTEM MOUNTING CASTING TO GRADE. INSPECTION COVER ON PRETREATMENT CHAMBER MUST BE DEVELOPED TO WITHIN TWELVE INCHES OF GRADE.
 - ④ TANK REINFORCED PER ACI STD. 318-99.
 - ⑤ REMOVABLE COVERS ON RISERS WEIGH IN EXCESS OF SEVENTY-FIVE POUNDS EACH TO PREVENT UNAUTHORIZED ACCESS.
 - ⑥ CONTACT THE LOCAL, LICENSED SINGLAIR® DISTRIBUTOR FOR ELECTRICAL REQUIREMENTS.



SECTION A-A

BIO-KINETIC® SYSTEM DISCHARGE DETAIL

BIO-KINETIC® SYSTEM MOUNTING CASTING AND COVER



OUTLET END VIEW

NOTE: PRETREATMENT CHAMBER MINIMUM REQUIREMENTS SHALL BE: 1,000 GALLONS CAPACITY, 15 GALLONS PER INCH OF LIQUID LEVEL AND 12 INCHES OF FREEBOARD.

CAST-IN-PLACE AERATION CHAMBER TRANSFER PORT

NOTE: SOME CRITICAL DIMENSIONS ARE INTENTIONALLY LEFT BLANK TO BE FILLED IN PER INDIVIDUAL JOB SITE SPECIFICATIONS.

NOTE: TOTAL SYSTEM CAPACITY: 2,300 GALLONS
RATED CAPACITY: 1,000 GALLONS PER DAY

PROJECT ENGINEER'S APPROVAL:
I (WE) HEREBY CERTIFY THAT THIS DRAWING HAS BEEN CHECKED AND IS APPROVED FOR USE IN CONFORMITY WITH THE CONTRACT DOCUMENTS.

DATE: _____
NAME: _____

CONTRACTOR'S CERTIFICATION:
I (WE) HEREBY CERTIFY THAT THIS DRAWING HAS BEEN CHECKED AND IS APPROVED FOR USE IN CONFORMITY WITH THE CONTRACT DOCUMENTS.

DATE: _____
NAME: _____

CRITICAL DIMENSIONS			
A	1'-0"	N	0'-3"
B	2'-9"	O	0'-6"
C	2'-8"	P	0'-2½"
D	3'-7"	Q	1'-4"
E	2'-3"	R	4'-8"
F	9'-3"	S	6'-0"
G	1'-0"	T	1'-0"
H	0'-3"	U	5'-6"
I	1'-0"	V	
J	0'-3"	W	
K	1'-0"	X	
L	0'-2"	Y	
M	4'-6"	Z	

U.S. AND FOREIGN PATENTS PENDING	<p>SINGLAIR® BIO-KINETIC® WASTEWATER TREATMENT SYSTEM MODEL 960-1000 GPD</p>	<small>DESIGN DATE:</small> 7-11-01 <small>REVISION:</small> B
		<small>APPROVED BY:</small> JMM <small>DATE:</small> 1-9-96 <small>SCALE:</small> NTS
		<small>DRAWING NO.:</small> PC-5-7008