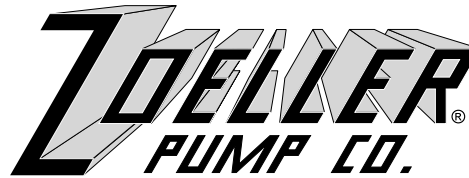


"QUALITY PUMPS SINCE 1939"



FM0922  
1004  
Supersedes  
0694

Product information presented here reflects conditions at time of publication. Consult factory regarding discrepancies or inconsistencies.

MAIL TO: P.O. BOX 16347 • Louisville, KY 40256-0347  
SHIP TO: 3649 Cane Run Road • Louisville, KY 40211-1961  
(502) 778-2731 • 1 (800) 928-PUMP • FAX (502) 774-3624

visit our web site:  
[www.zoeller.com](http://www.zoeller.com)



## ENGINEERING SPECIFICATIONS SHEET SUBMERSIBLE EFFLUENT & DEWATERING PUMP 189 SINGLE SEAL SERIES

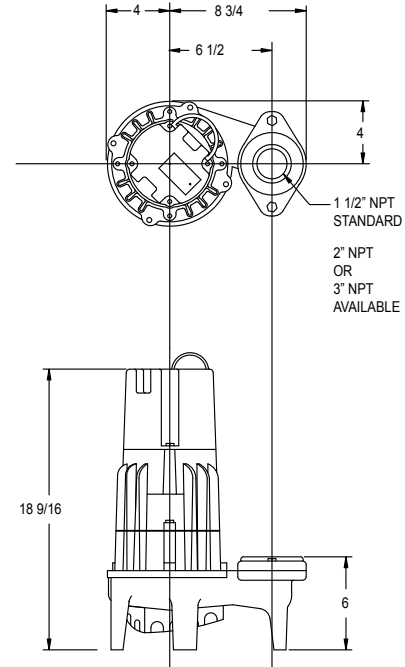


### MATERIAL SPECIFICATIONS:

- Durable cast iron switch case, base, and pump housing.
- Non-clogging bronze vortex impeller design.
- Motor - 60 cycle, 3450 RPM, oil filled, hermetically sealed, automatic reset thermal overload protected (1 PH).
- 20' Cord - UL listed 3-wire neoprene cord and plug.
- Shaft seal - Stainless steel, carbon stationary & ceramic rotary.
- Stainless steel screws, bolts, handle, guard, and arm and seal assembly.
- Square Ring & Gasket - Neoprene.
- Bearings - Upper sleeve and lower ball bearing running in bath of oil.
- Corrosion resistant powder coated epoxy finish.

### ENGINEERING FEATURES:

- Passes 3/4-inch spherical solids.
- 1-1/2" NPT discharge with 2" or 3" flange available.
- Not effected by materials normally found in drainage and sewage sumps.
- Temperature to 130° F (54° C).
- Available in single or double seal designs.
- No screens to clog.



SK1022

189 MODELS	4189 MODELS	Control Section						Listings	
		Volts	Ph	Mode	Amps	Simplex	Duplex	CSA	UL
D189 <sup>(3)</sup>	-----	230	1	Auto	17.1	1	-----	N	Y <sup>(1)</sup>
E189 <sup>(3)</sup>	E4189 <sup>(3)</sup>	230	1	Non	17.1	2 or 3	4	Y <sup>(2)</sup>	Y <sup>(1)</sup>
H189*	-----	200-208	1	Auto	20.5	1	-----	N	N
I189*	I4189*	200-208	1	Non	20.5	2 or 3	4	N	N
J189*	J4189*	200-208	3	Non	13.2	3 & 5	4 & 5	Y	Y
F189*	F4189*	230	3	Non	11.2	3 & 5	4 & 5	Y	Y
G189*	G4189*	460	3	Non	6.0	3 & 5	4 & 5	Y	Y
BA189	-----	575	3	Non	5.8	3 & 5	4 & 5	Y	N
WD189 <sup>(3)</sup>	WD4189*	230	1	Auto	17.1	1	4	N	N

\*No Moulded Plug

<sup>(1)</sup>UL Listed unit available with 20 Amp Plug. <sup>(2)</sup>CSA Approval without plug cap. <sup>(3)</sup>20 Amp Outlet, P/N 10-0060 must be used.

### SELECTION GUIDE

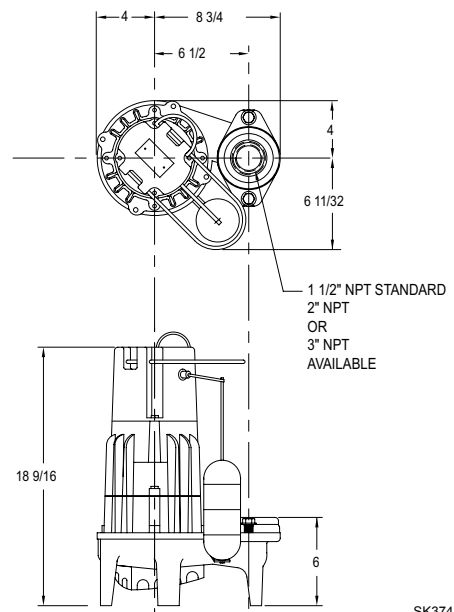
1. Integral float operated mechanical switch, no external control required.
2. For automatic use single piggyback variable level float switch or double piggyback variable level float switch. Refer to FM0477.
3. See FM1228 for correct model of simplex control panel.
4. See FM0712 for correct model of duplex control panel.
5. Variable level control switch 10-0225 used as control activator, specify simplex (3) float or duplex (3) or (4) float system.



Certified to CSA  
Standard C22.2 No.108



Tested to UL  
Standard UL778



SK374



# ENGINEERING SPECIFICATIONS SHEET

## SUBMERSIBLE EFFLUENT & DEWATERING PUMP

### 189 DOUBLE SEAL SERIES

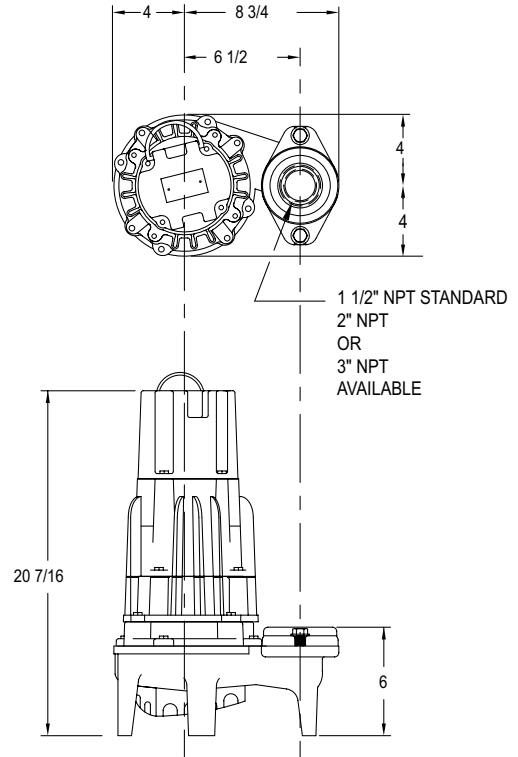


#### MATERIAL SPECIFICATIONS:

- Durable cast iron cover, base, and pump housing.
- Non-clogging bronze vortex impeller design.
- Motor - 60 cycle, 3450 RPM, oil filled, hermetically sealed, automatic reset thermal overload protected (1 PH).
- 20' Cord - UL listed 3-wire neoprene cord and plug.
- Shaft seal - Stainless steel, carbon stationary & ceramic rotary.
- Stainless steel screws, bolts and handle.
- Square Ring & Gasket - Neoprene.
- Bearings - Upper sleeve and lower ball bearing running in bath of oil.
- Corrosion resistant powder coated epoxy finish.

#### ENGINEERING FEATURES FOR DOUBLE SEAL:

- Protects motor from seal leaks.
- Improved bearing lubrication.
- Helps eliminate seal and bearing damage from dry runs.
- Major width 12-3/4", Height 20-7/16".
- Passes 3/4-inch spherical solids.
- 1-1/2" NPT discharge with 2" or 3" flange available.
- Not effected by materials normally found in drainage and sewage sumps.
- Temperature to 130° F (54° C).
- No screens to clog.



SK1413



Certified to CSA  
Standard C22.2 No. 108



Tested to UL  
Standard UL778

